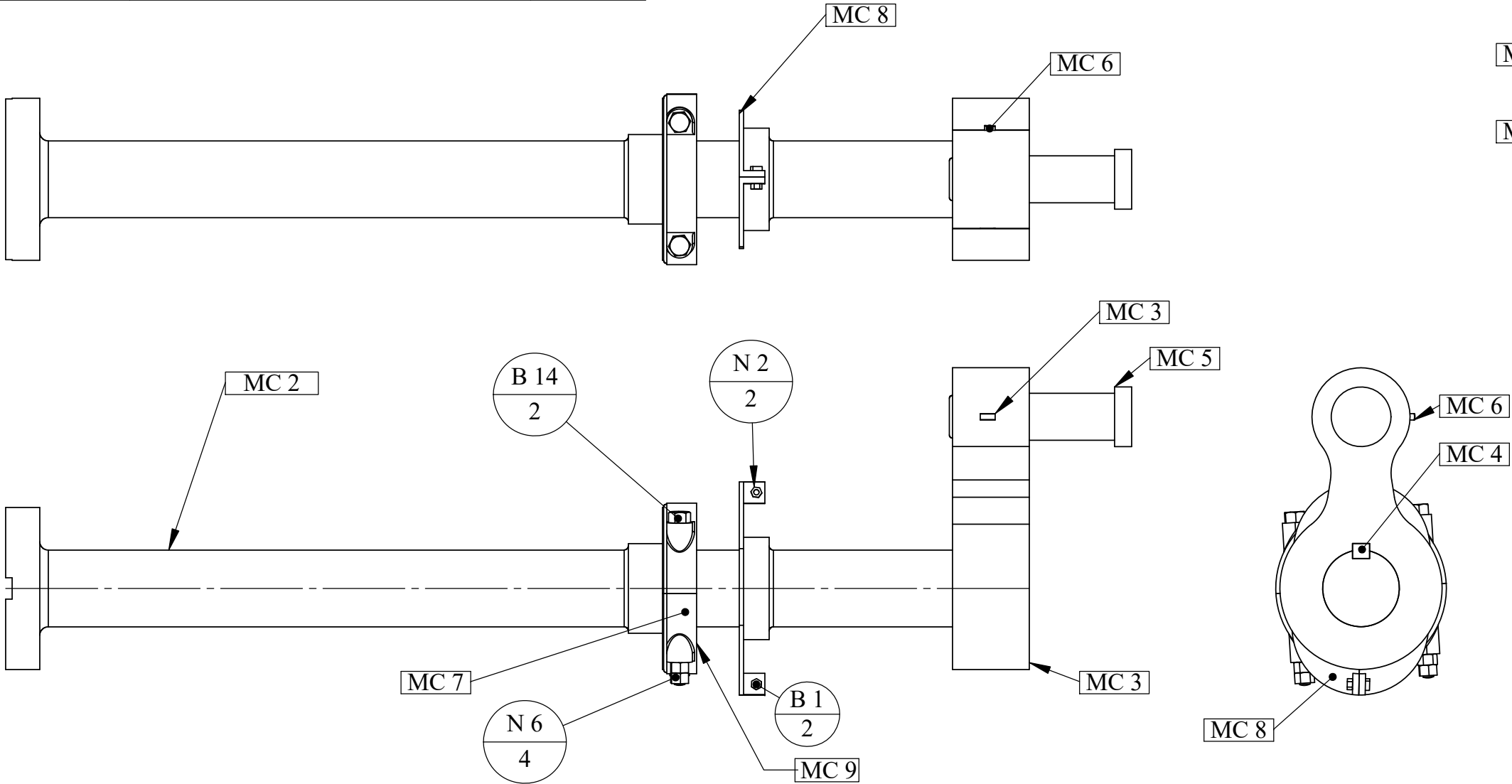
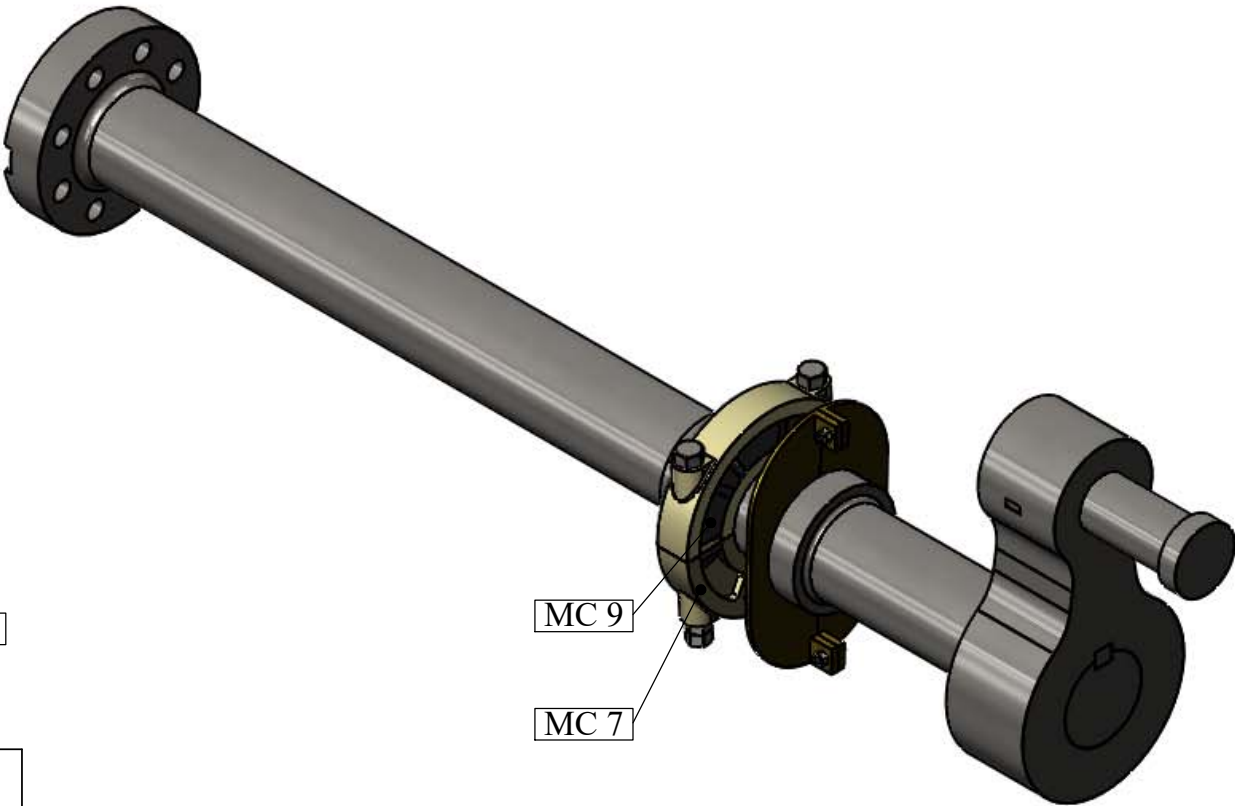
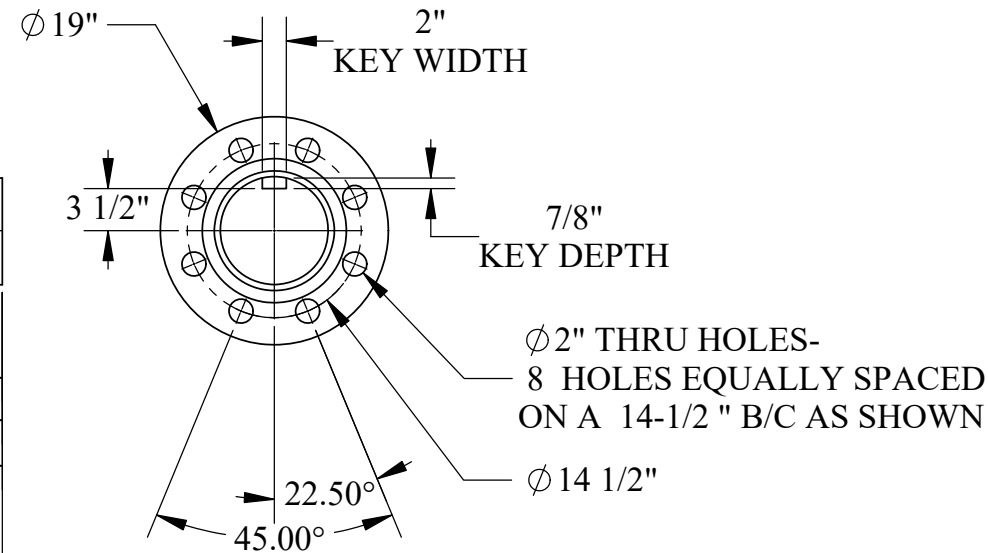
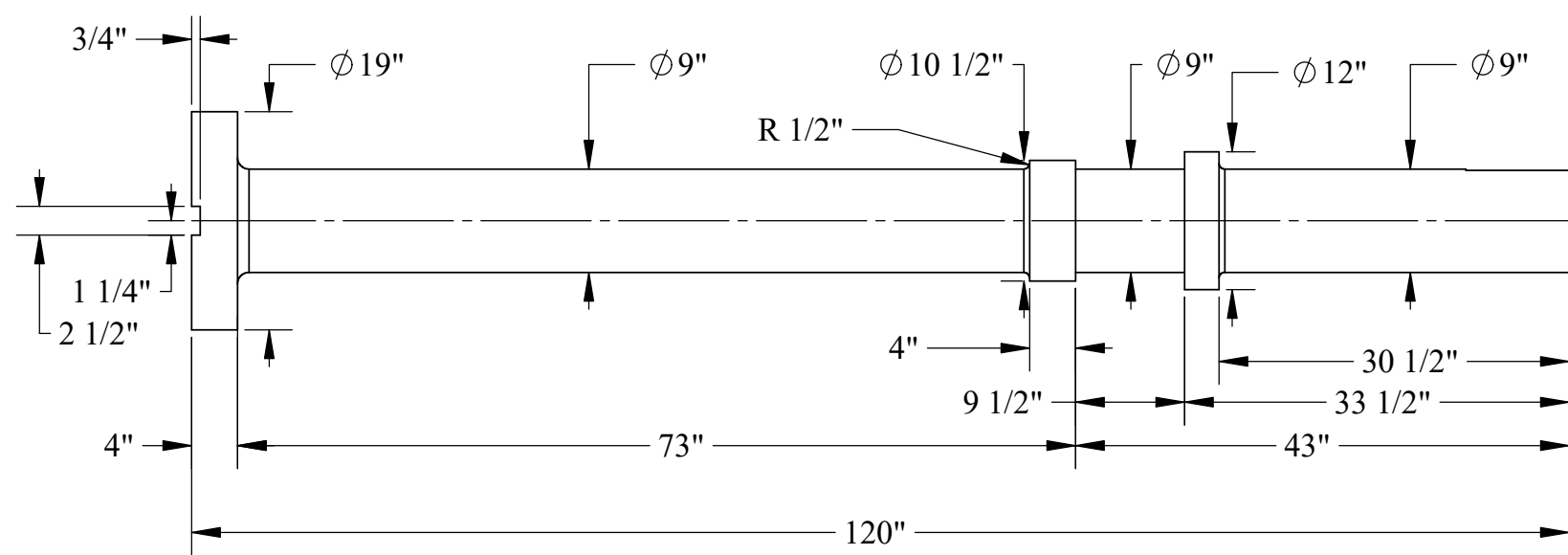
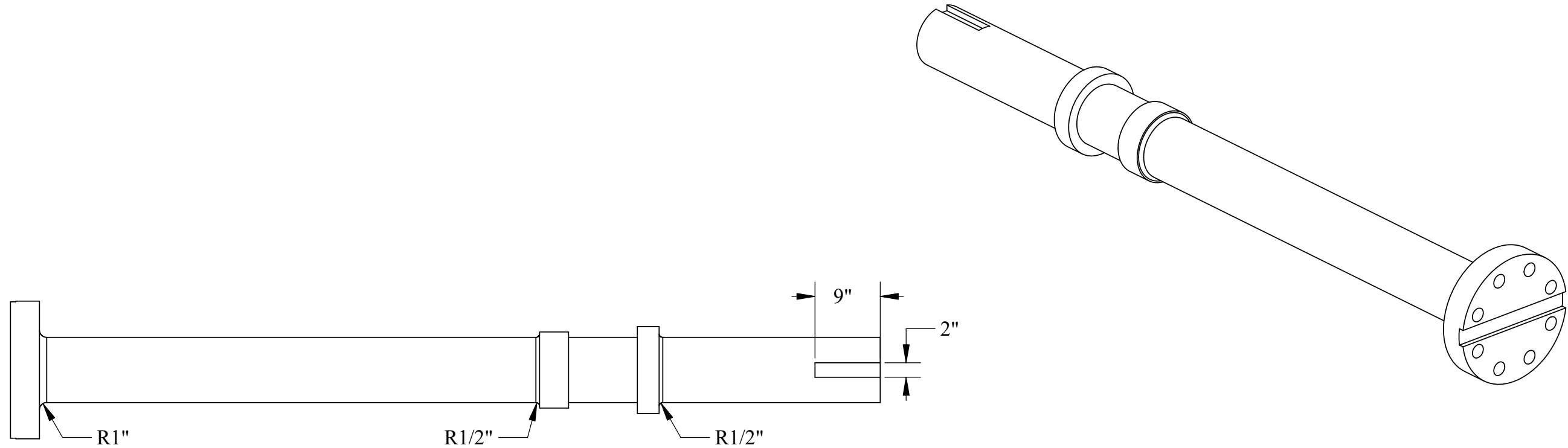


| PART NUMBER | DESCRIPTION                       | QTY. |
|-------------|-----------------------------------|------|
| MC 2        | Main Crank Shaft                  | 1    |
| MC 3        | Main Crank Throw                  | 1    |
| MC 4        | Main Crank Throw Key              | 1    |
| MC 5        | Crank Pin                         | 1    |
| MC 6        | Crank Pin Tapered Cotter Pin      | 1    |
| MC 7        | Thrust Collar                     | 2    |
| MC 8        | Reverse Thrust Bearing            | 2    |
| MC 9        | Thrust Collar Babbitt Inserts (3) | 2    |
| N 2         | 5/8" Hex Nut                      | 2    |
| N 6         | 1-1/4" Hex Nut-Special            | 4    |
| B 1         | 5/8" Bolt x 2"                    | 2    |
| B 14        | 1-1/4" Bolt x 19"                 | 2    |



U.S.S. Monitor Steam Engine

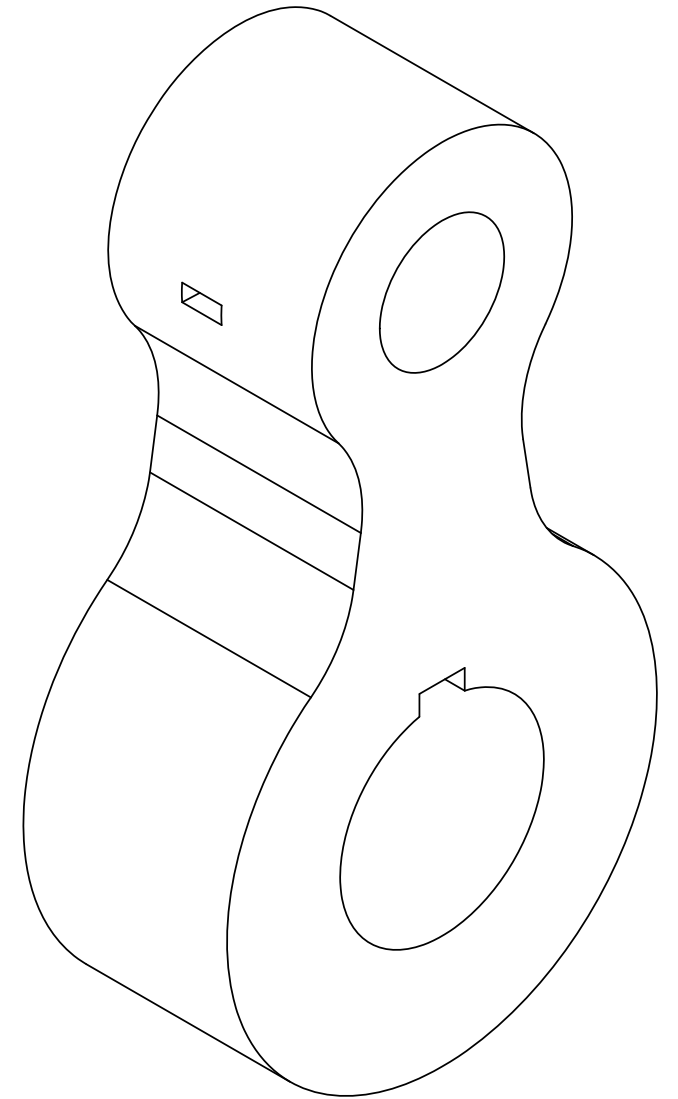
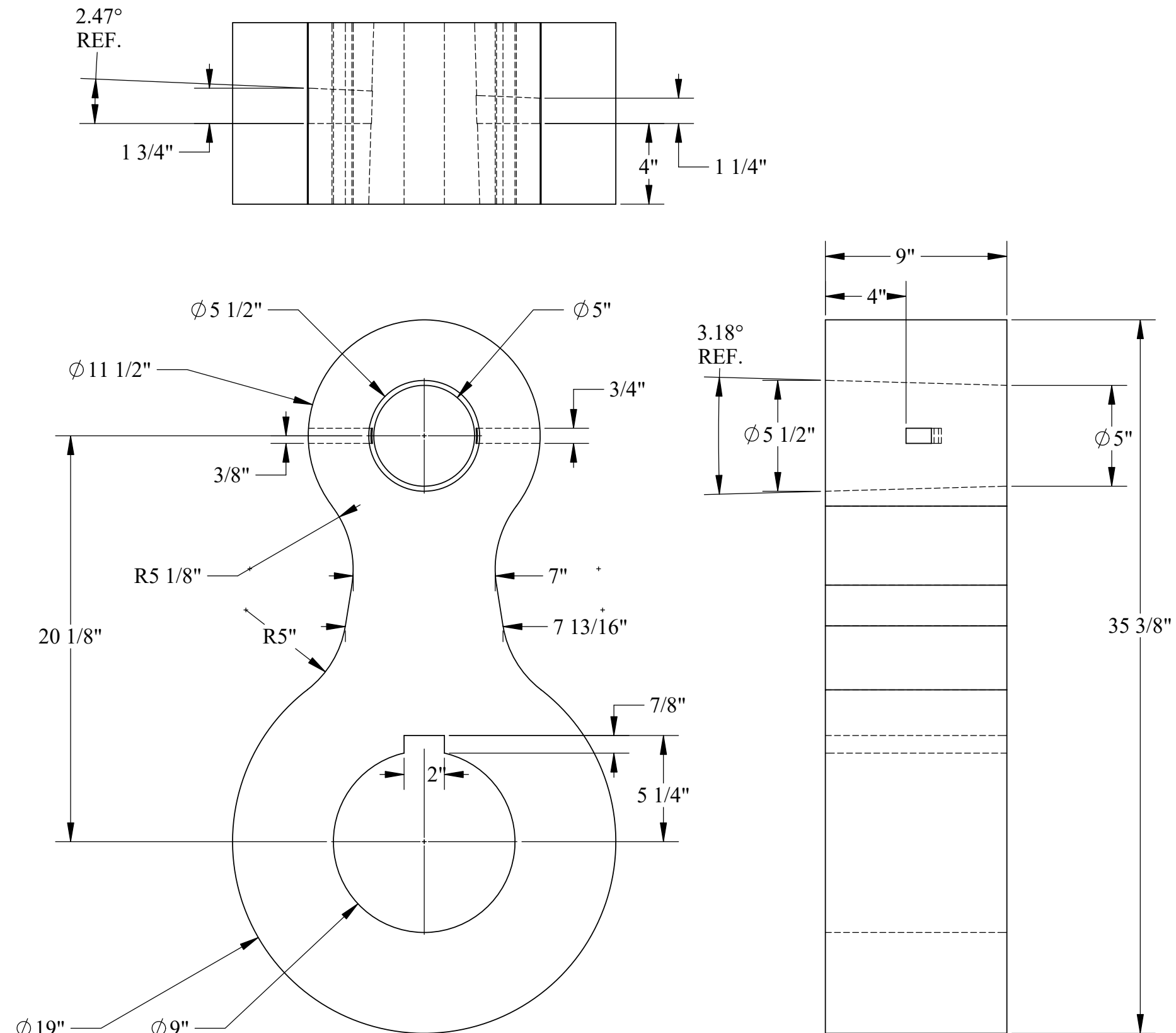
|              |                        |              |
|--------------|------------------------|--------------|
| Material     | Drawn By - Date        | Sub-Assembly |
| Weight (Lbs) | RWC 12-2018            | Main Crank   |
| Scale        | Main Crank<br>Assembly |              |
| Part #       |                        |              |
| MC 1         |                        |              |



NOTE:  
KEYWAYS ARE  
AT 90 DEGREES  
TO EACH OTHER

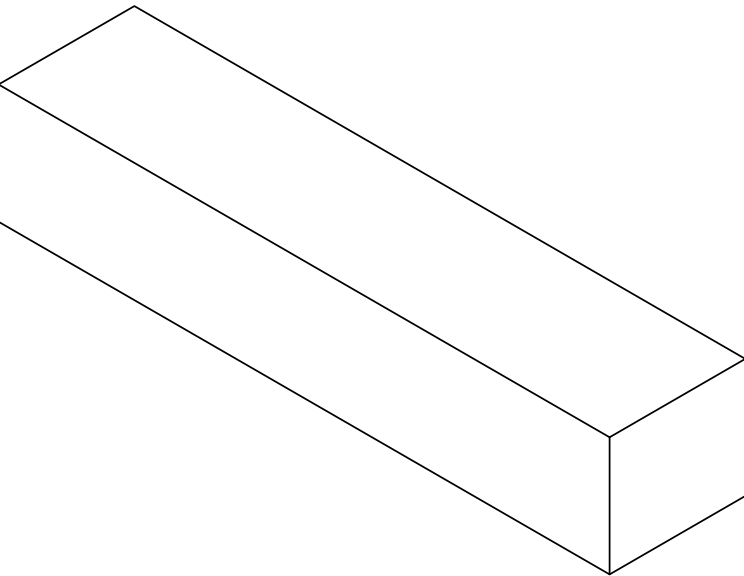
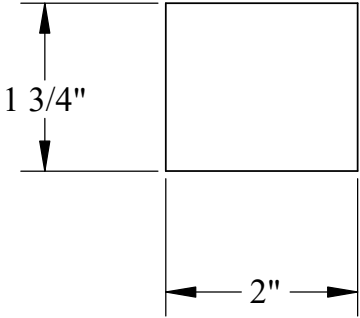
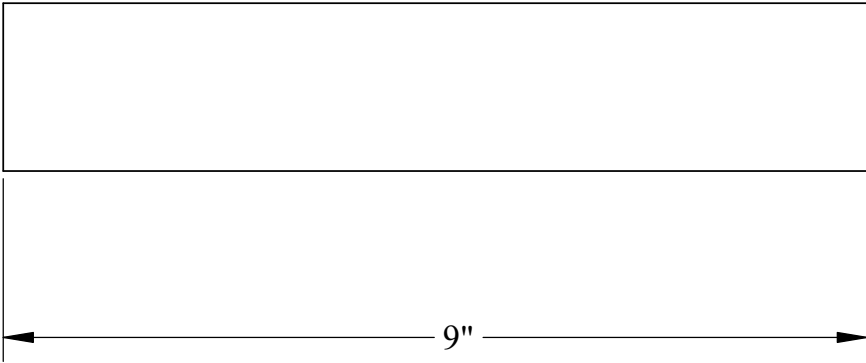
U.S.S. Monitor Steam Engine

|                         |                                     |                            |
|-------------------------|-------------------------------------|----------------------------|
| Material<br>STEEL       | Drawn By - Date<br>RWC 10-2018      | Sub-Assembly<br>Main Crank |
| Weight (Lbs)<br>2457.45 | Description<br><br>Main Crank Shaft |                            |
| Scale<br>1:16           |                                     |                            |
| Part #<br>MC 2          |                                     |                            |



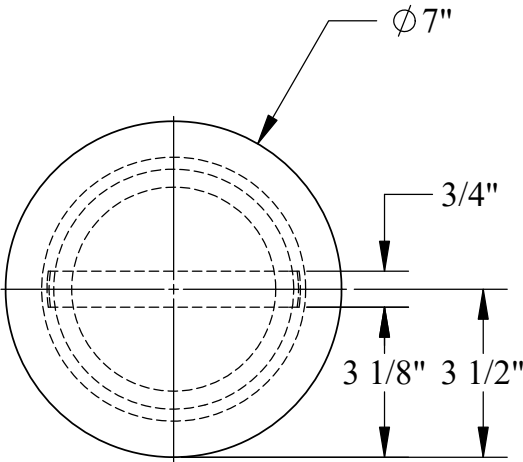
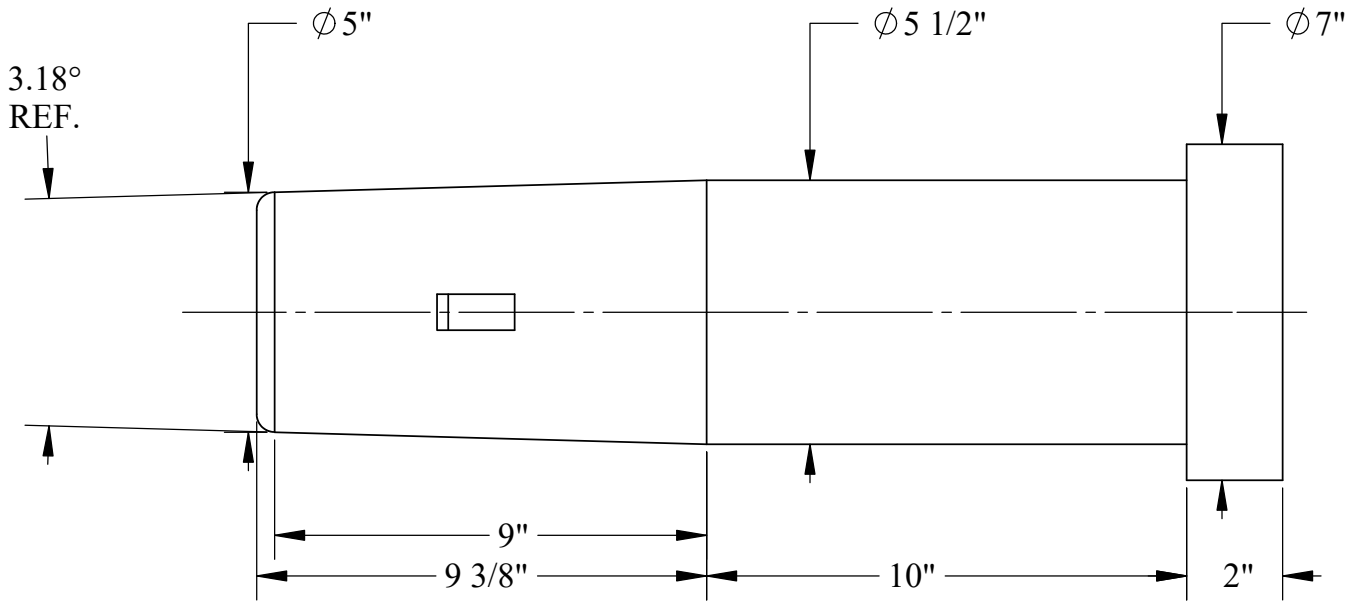
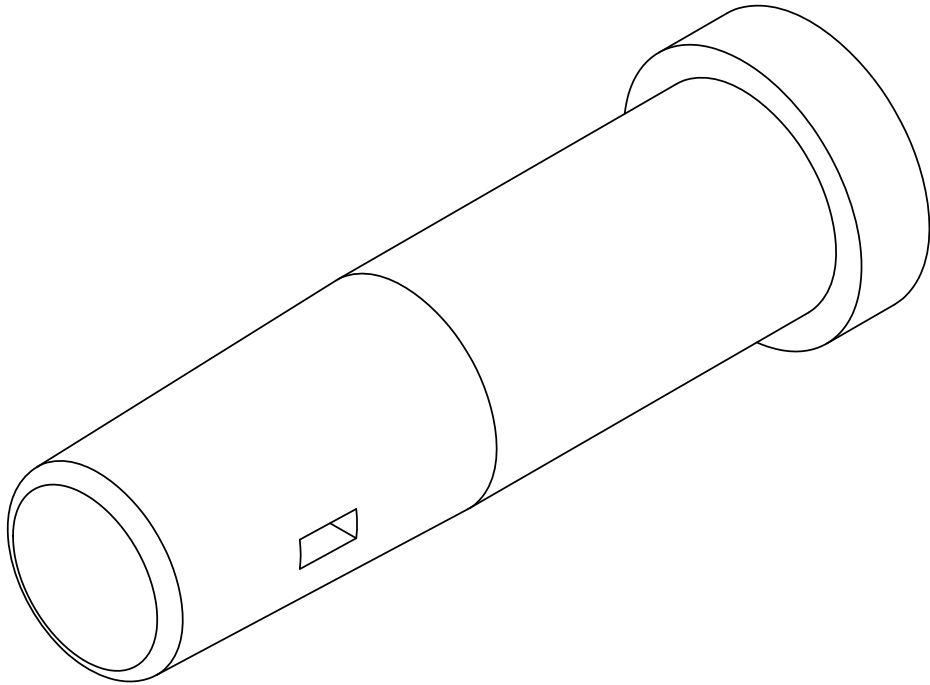
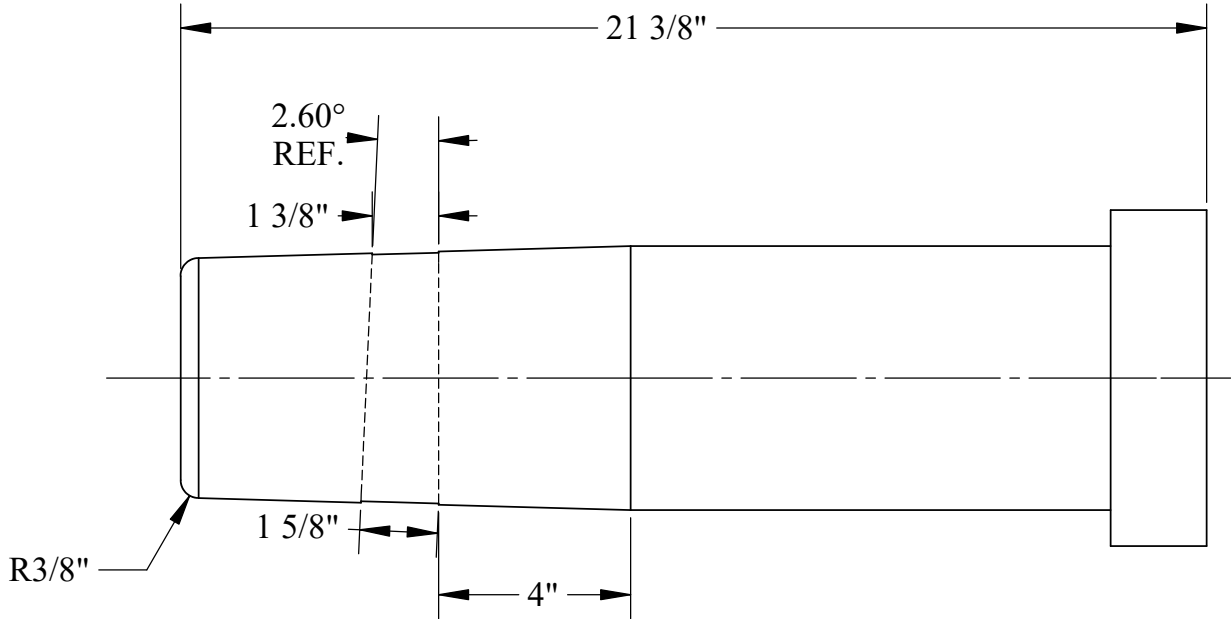
## U.S.S. Monitor Steam Engine

|                               |  |                                   |
|-------------------------------|--|-----------------------------------|
| Material<br><b>STEEL</b>      | Drawn By - Date<br><b>RWC 10-2018</b>  | Sub-Assembly<br><b>Main Crank</b> |
| Weight (Lbs)<br><b>882.51</b> | Description<br><b>Main Crank Throw</b> |                                   |
| Scale<br><b>1:6</b>           |  |                                   |
| Part #<br><b>MC 3</b>         |  |                                   |



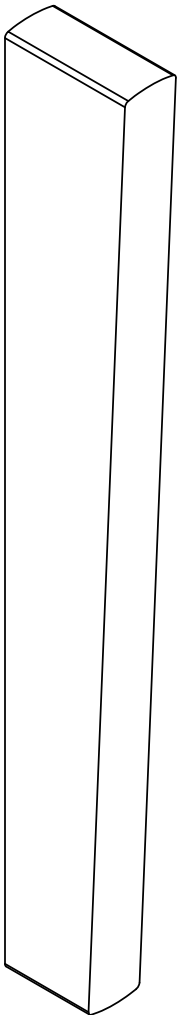
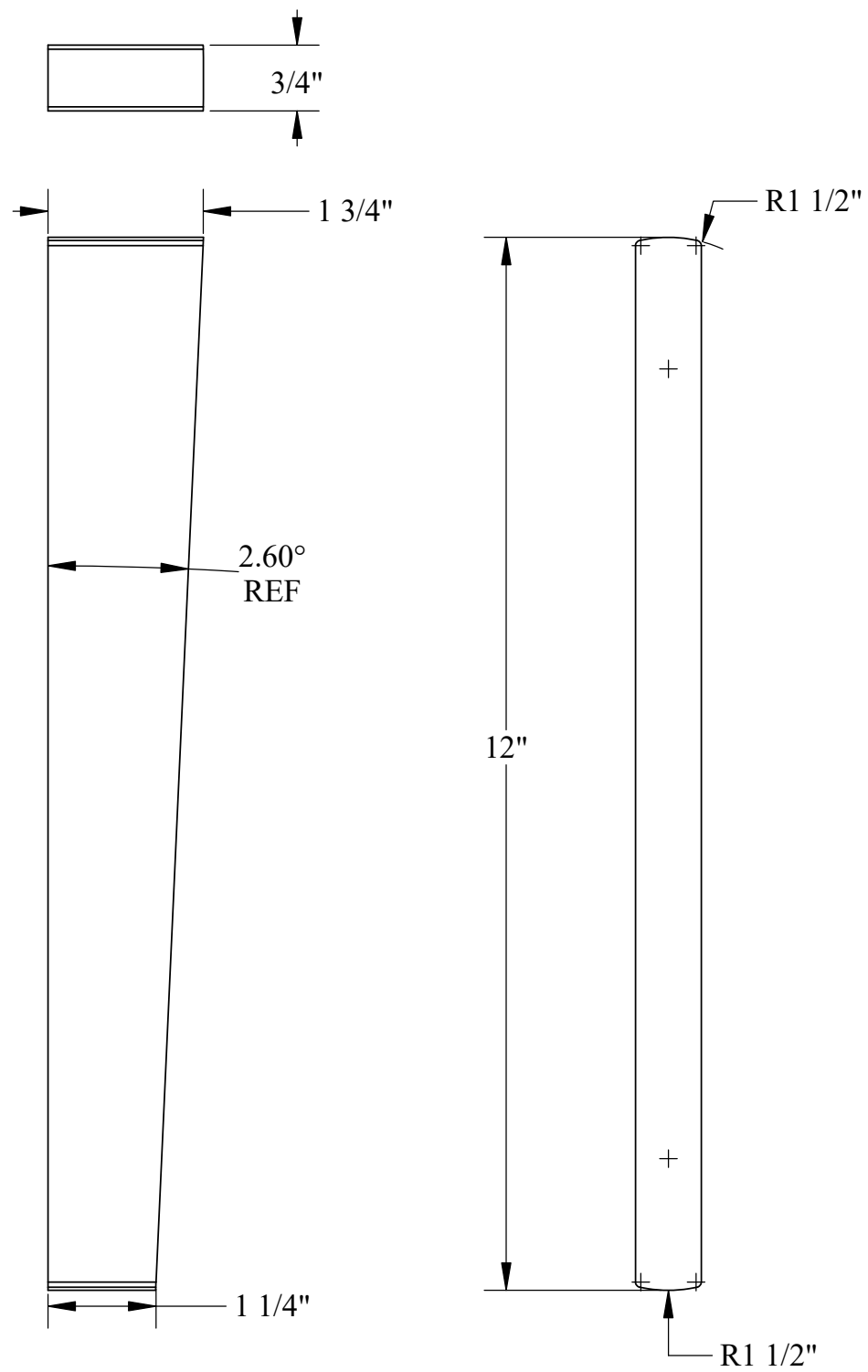
U.S.S. Monitor Steam Engine

|                      |                                |                            |
|----------------------|--------------------------------|----------------------------|
| Material<br>STEEL    | Drawn By - Date<br>RWC 10-2018 | Sub-Assembly<br>Main Crank |
| Weight (Lbs)<br>8.99 | Main Crank Throw<br>Key        |                            |
| Scale<br>1:2         |                                |                            |
| Part #<br>MC 4       |                                |                            |



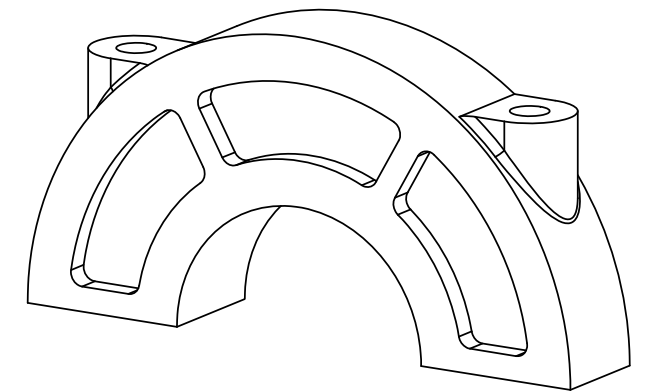
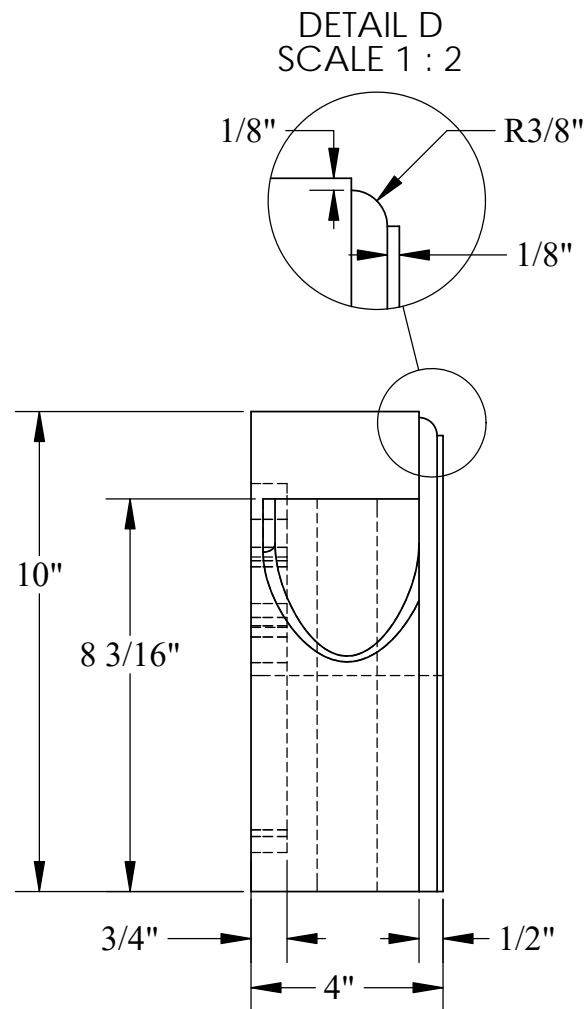
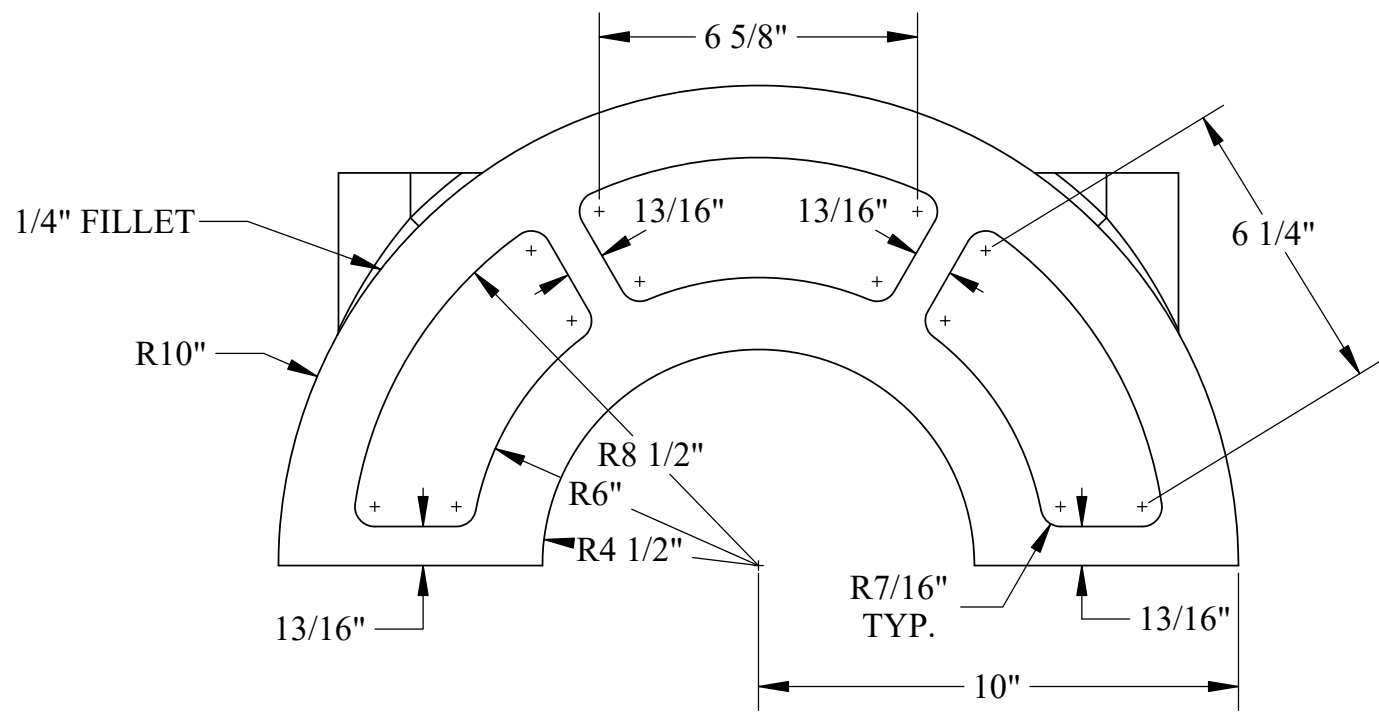
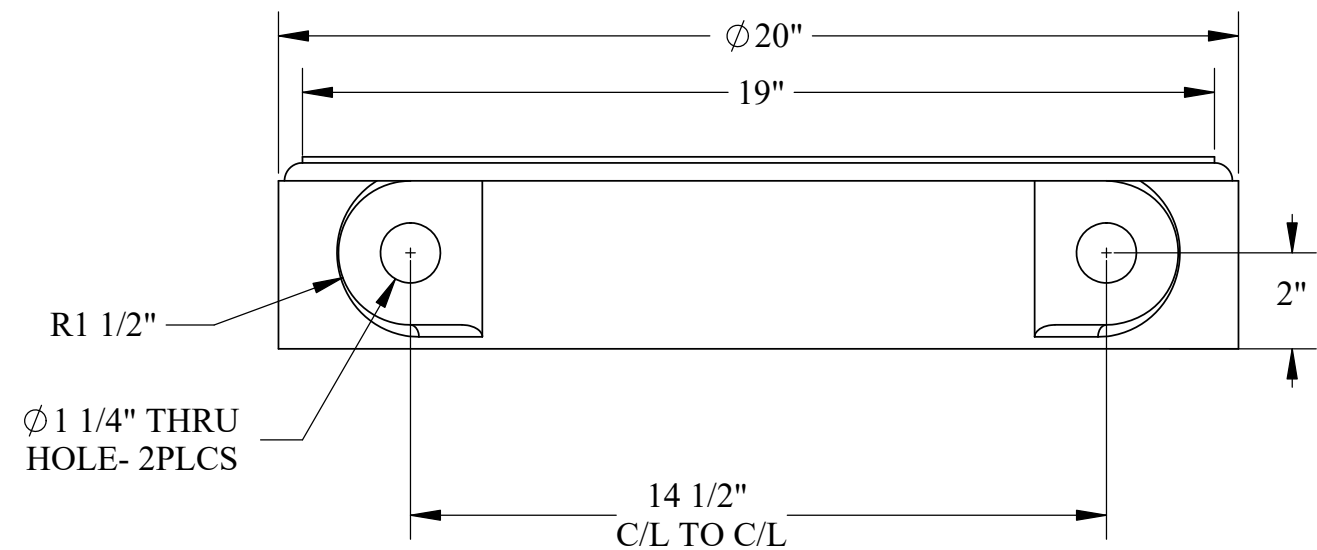
U.S.S. Monitor Steam Engine

|                        |                                |                            |
|------------------------|--------------------------------|----------------------------|
| Material<br>STEEL      | Drawn By - Date<br>RWC 10-2018 | Sub-Assembly<br>Main Crank |
| Weight (Lbs)<br>145.72 | Crank Pin                      |                            |
| Scale<br>1:4           |                                |                            |
| Part #<br>MC 5         |                                |                            |

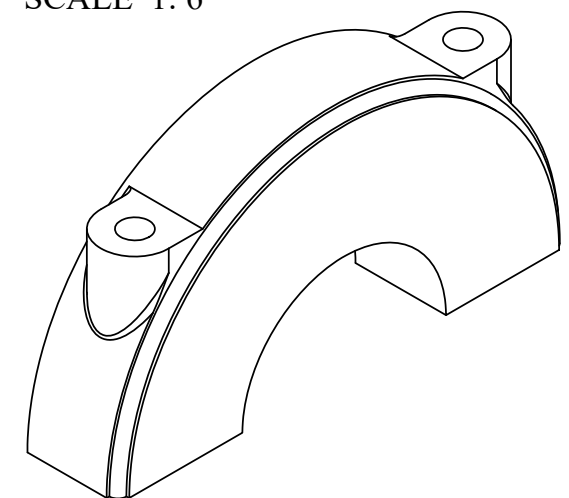


U.S.S. Monitor Steam Engine

|                      |  |                            |
|----------------------|--|----------------------------|
| Material<br>STEEL    | Drawn By - Date<br>RWC 10-2018                     | Sub-Assembly<br>Main Crank |
| Weight (Lbs)<br>3.84 | Description<br><br>Crank Pin Tapered<br>Cotter Pin |                            |
| Scale<br>1:2         |  |                            |
| Part #<br>MC 6       |  |                            |

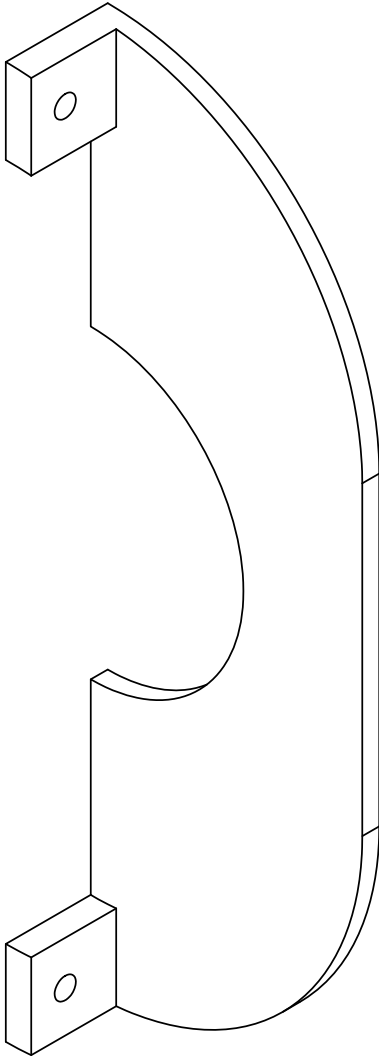
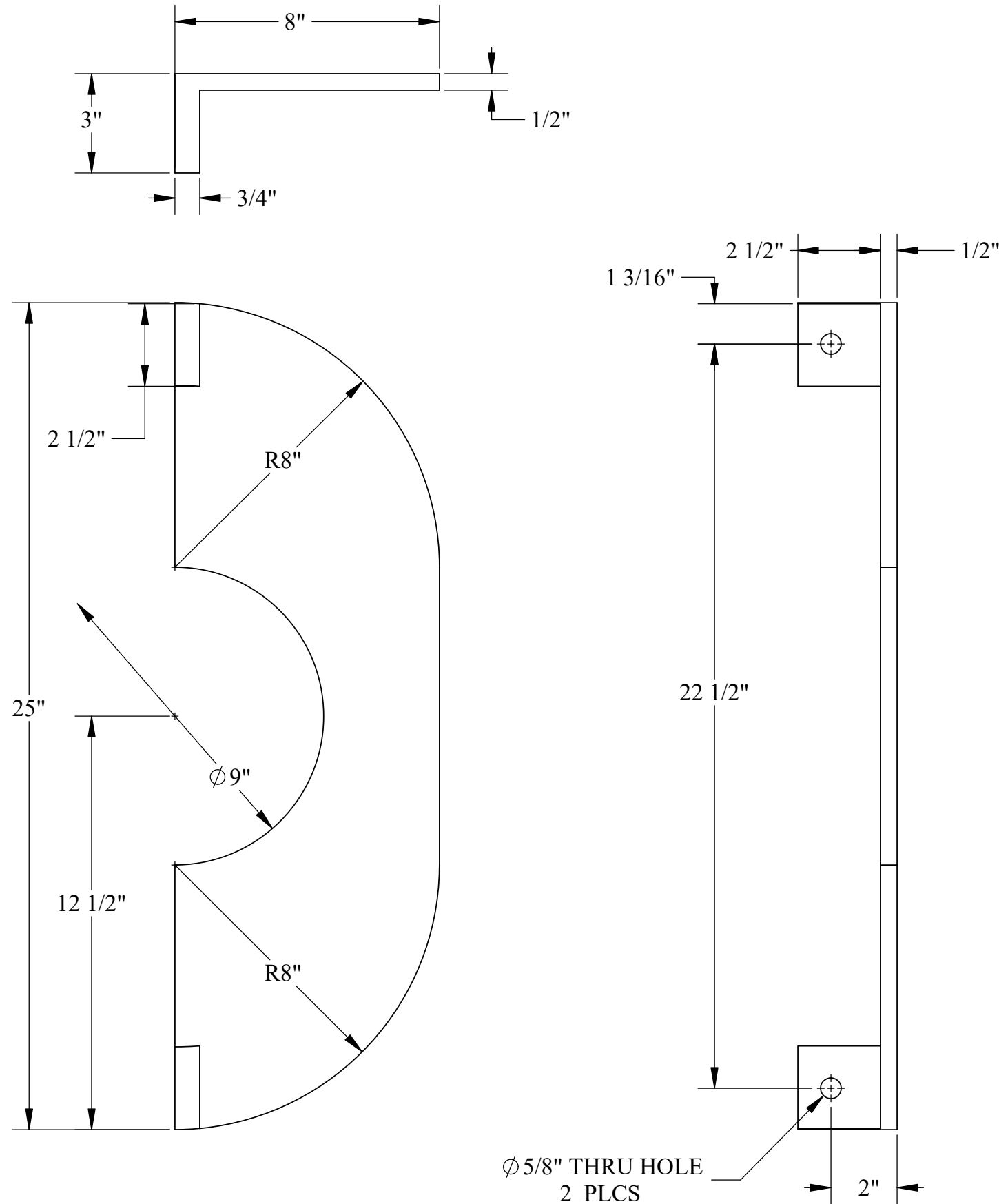


SCALE 1:6



## U.S.S. Monitor Steam Engine

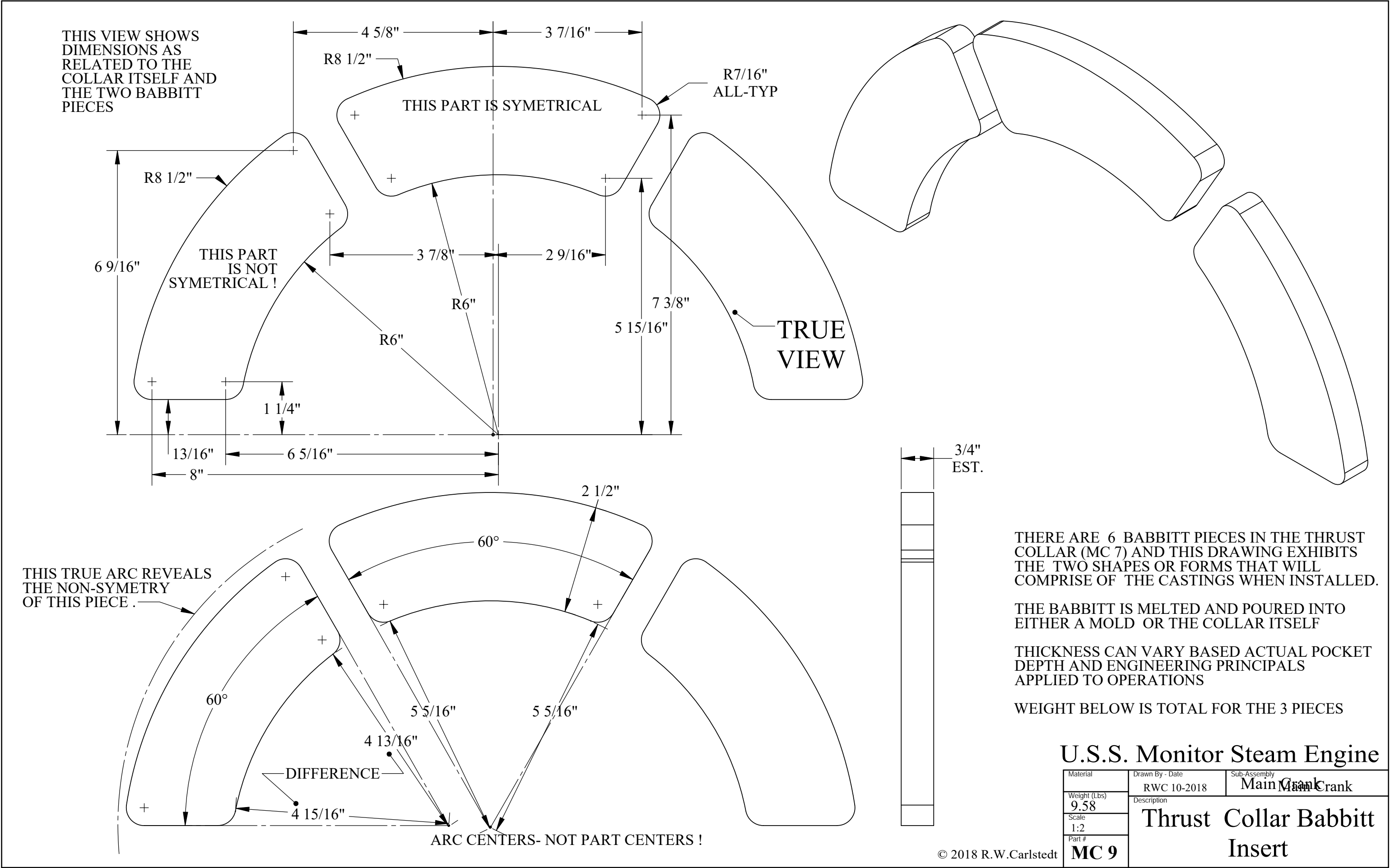
|                        |                                |                            |
|------------------------|--------------------------------|----------------------------|
| Material<br>Cast Iron  | Drawn By - Date<br>RWC 10-2018 | Sub-Assembly<br>Main Crank |
| Weight (Lbs)<br>119.80 | Thrust Collar                  |                            |
| Scale<br>1:4           |                                |                            |
| Part #<br>MC 7         |                                |                            |



U.S.S. Monitor Steam Engine

|              |                           |              |
|--------------|---------------------------|--------------|
| Material     | Drawn By - Date           | Sub-Assembly |
| Brass        | RWC 10-2018               | Main Crank   |
| Weight (Lbs) | Description               |              |
| 24.34        |                           |              |
| Scale        |                           |              |
| 1:4          |                           |              |
| Part #       | Reverse Thrust<br>Bearing |              |
| MC 8         |                           |              |





THERE ARE 6 BABBITT PIECES IN THE THRUST COLLAR (MC 7) AND THIS DRAWING EXHIBITS THE TWO SHAPES OR FORMS THAT WILL COMPRISE OF THE CASTINGS WHEN INSTALLED.

THE BABBITT IS MELTED AND POURED INTO EITHER A MOLD OR THE COLLAR ITSELF

THICKNESS CAN VARY BASED ACTUAL POCKET DEPTH AND ENGINEERING PRINCIPALS APPLIED TO OPERATIONS

WEIGHT BELOW IS TOTAL FOR THE 3 PIECES

U.S.S. Monitor Steam Engine

|              |                              |              |
|--------------|------------------------------|--------------|
| Material     | Drawn By - Date              | Sub-Assembly |
| Weight (Lbs) | RWC 10-2018                  | Main Crank   |
| Scale        | Description                  |              |
| 1:2          | Thrust Collar Babbitt Insert |              |
| Part #       |                              |              |
| MC 9         |                              |              |